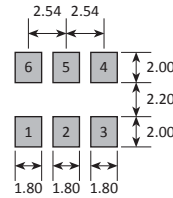


SOLDER PAD LAYOUT



PAD	CONNECTION
1	Control voltage
2	Enable / disable
3	Ground
4	Output 1 (Q)
5	Output 2 (\bar{Q})
6	Supply

Features

- ▣ Frequencies up to 800MHz
- ▣ Complementary LV-PECL outputs
- ▣ Fast rise / fall times
- ▣ Enable / disable tristate function

Enable / Disable Function

Input (pad 2) *	Output 1 (pad 4)	Output 2 (pad 5)
Open	Active	Active
'1' level V_{IH}	High Z	High Z
'0' level V_{IL}	Active	Active

* Note: '0' level = $V_{IL} \leq 1.70V$, '1' level = $V_{IH} \geq 2.20V$

Specifications

Parameters	Product	Option Codes
	GVXO-54	
Frequency range:	12.0 ~ 800MHz	■
Voltage control (V_{CTL}):	+1.65V \pm 1.50V, 10% linearity	■
Frequency pullability (min):	\pm 150ppm Other	■ □ specify
Frequency stability*:	\pm 50ppm \pm 25ppm Other	■ □ □ specify
Operating temperature range:	-10 to +70°C -40 to +85°C	■ □ I
Storage temperature range:	-40 to +85°C	■
Supply voltage (V_{DD}):	+3.3V (\pm 5%)	■
Supply current:	65mA max (\leq 100MHz) 120mA max ($>$ 100 ~ 800MHz)	■ ■
Output:	Complementary PECL	■
Test load:	$R_T = 50\Omega$ $V_T = 1.3V$	■ ■
Logic levels:	'0' level = +1.7V max '1' level = +2.2V min	■ ■
Waveform symmetry:	40:60 max @ 50% V_{p-p}	■
Rise / fall time (20% ~ 80% V_{p-p}):	1.0ns max (12.0 ~ 100MHz) 0.5ns max ($>$ 100MHz)	■ ■
Phase jitter:	5ps max (12kHz ~ 20MHz)	■

■ Standard. □ Optional - Please specify required code(s) when ordering

* Frequency stability is inclusive of operating temperature range, supply voltage change and ageing, with $V_{CTL} = +1.65V$

Ordering Information

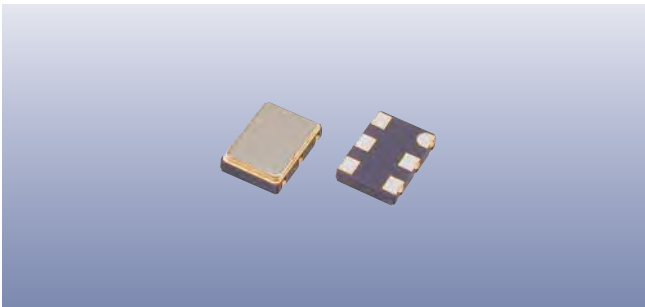
Product + option codes + frequency

eg: **GVXO-54/C 155.520MHz** \pm 25ppm stability -10+70°C

GVXO-54/BI 77.760MHz \pm 50ppm stability -40+85°C

Option codes must be included to specify a model completely.

Option code X (eg GVXO-54/X) denotes a custom spec.



Construction

- ▮ Ceramic body with gold-plated pads
- ▮ Metal lid, seam sealed

Composition



This product is lead-free, and is fully compliant with the RoHS 2 directive 2011/65/EU



Packaging & Handling

Production quantities supplied on T&R, 2k pcs per reel.
Small quantities may be supplied on tape (no reel), or in bulk.



◆ Static sensitive product. Observe proper handling precautions

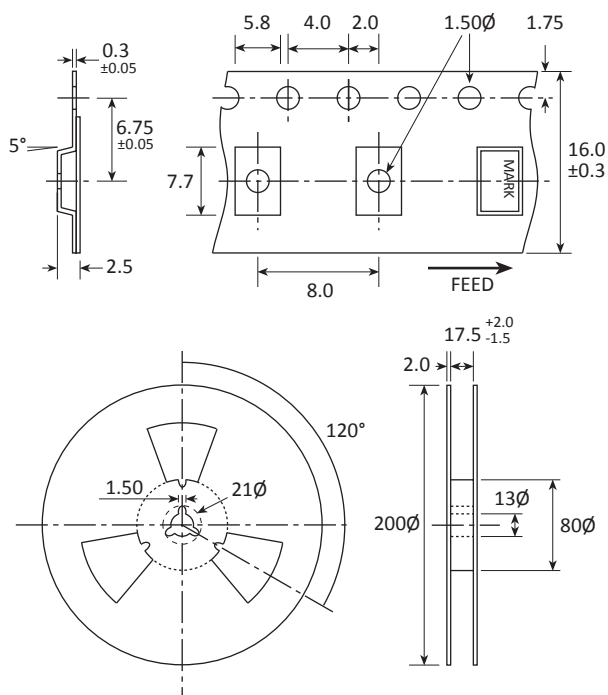
Marking

GOLLEDGE
FREQUENCY
• PARTNO DC

- Pin 1
- Marking type: Laser
- DC = Date code in YM, eg "FE" = May 2016

	A	B	C	D	E	F	G	H	J	K	L	M
Y	1	2	3	4	5	6	7	8	9	0		
M	Jan	Feb	Mar	Apr	May	Jun	Jul	Aug	Sep	Oct	Nov	Dec

Tape & Reel Specification



Not to scale. Dimensions in mm. Tolerances ±0.1mm unless otherwise stated

Soldering Profile

