

3.2 x 1.3 x 1.0mm BUILT-IN CAPACITANCE CERAMIC RESONATOR



3.2 x 1.3 x 1.0 mm

AWSCR-CE

Moisture Sensitivity Level (MSL) – This product is not Moisture Sensitive - MSL = 1

RoHS/RoHS II Compliant

Pb in ceramic, exemption (7c-I)

FEATURES:

- Low resonant impedance

APPLICATIONS:

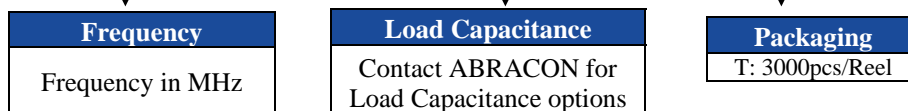
- Remote controls, Microprocessor clocks, DVD & CD-ROMs, Electric appliances
- Consumer electronics

STANDARD SPECIFICATIONS:

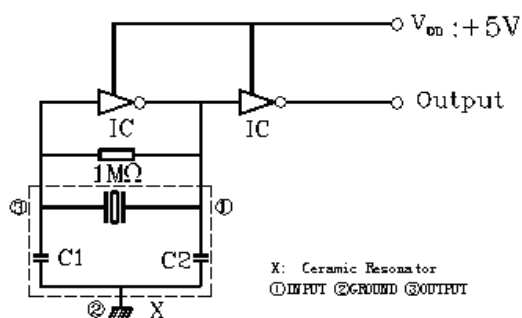
Parameters	Minimum	Typical	Maximum	Units	Notes
Frequency Range	8.00		12.00	MHz	
Resonant Impedance (Ro)			40	Ω	
Load Capacitance (C1=C2, for test circuit)	12	15	18	pF	
Frequency Tolerance @25 °C	-0.5		+0.5	%	
Frequency Stability (-25°C to +85°C)	-0.3		+0.3	%	
Withstanding Voltage		50		V	DC , 1 min
Rating Voltage	(1) D.C. Voltage		+6	V	
	(2) A.C. Voltage		15	Vp-p.	
Insulation Resistance	100			M Ω	10V, 1min
Operation Temperature	-25		+85	°C	
Storage Temperature	-55		+85	°C	
Aging Rate (Fosc) (10 years)	-0.2		+0.2	%	

OPTIONS AND PART IDENTIFICATION

AWSCR - XX.XX CE - C□□ - □



TEST CIRCUIT:



X: Ceramic Resonator
C1=C2: 15pF \pm 20%
1: INPUT 2: GROUND 3: OUTPUT

Parts shall be measured under a condition (Temp.: 20 \pm 15°C, Humidity: 65 \pm 20% R.H.) unless the standard condition (Temp: 25 \pm 3°C, Humidity: 65 \pm 10% R.H.) is regulated to test.

3.2 x 1.3 x 1.0mm BUILT-IN CAPACITANCE CERAMIC RESONATOR

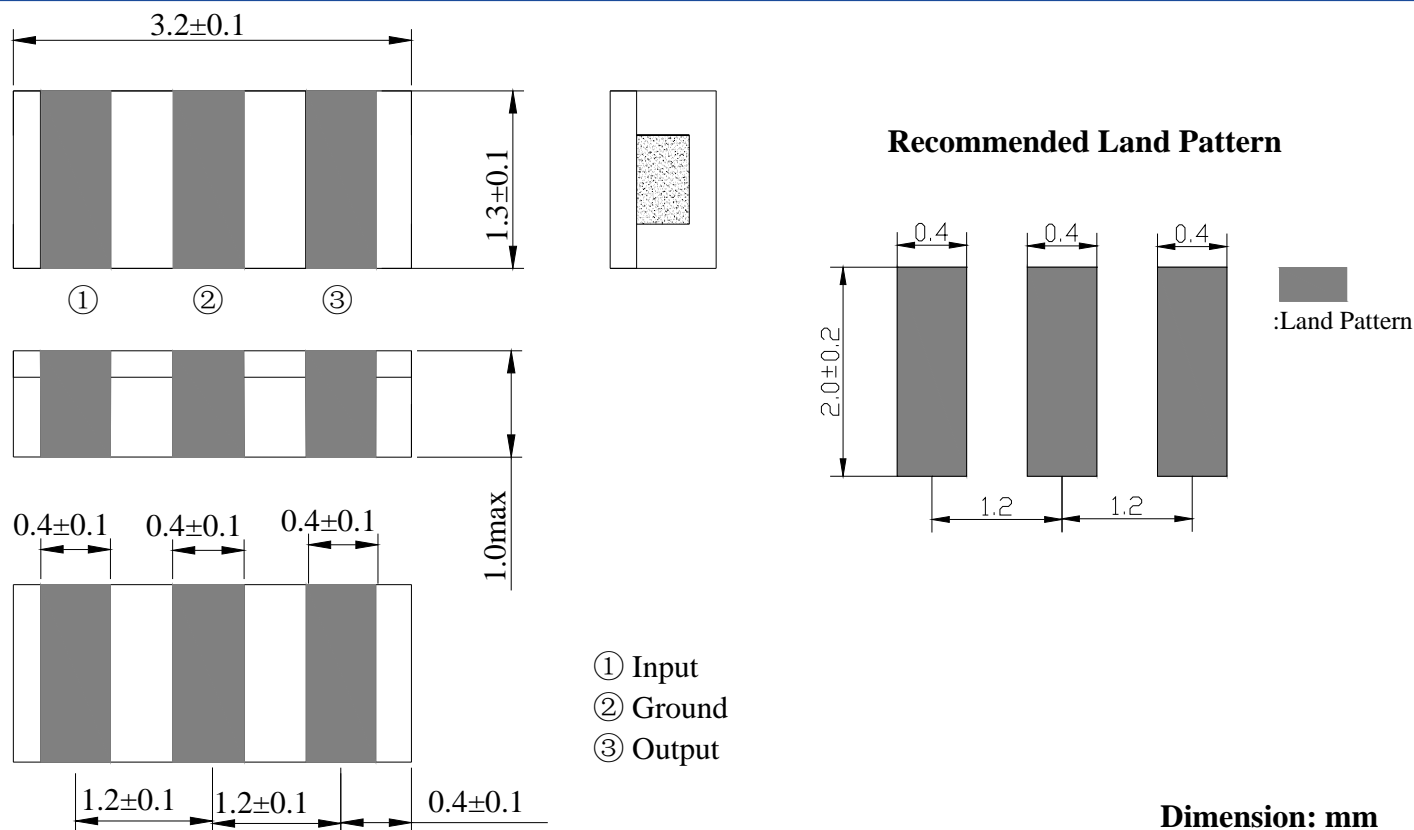


3.2 x 1.3 x 1.0 mm

AWSCR-CE

RoHS/RoHS II Compliant
Pb in ceramic, exemption (7c-I)

OUTLINE DIMENSIONS:



REFLOW PROFILE:

