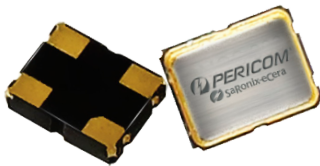


Quartz Crystal Ceramic SMD

FHQ



2.5 x 2.0mm Ceramic SMD

Product Features

- Rugged AT-cut crystal construction
- Miniature 2.5 x 2.0mm ceramic package
- Available on tape & reel; 8mm tape, 3000 units per reel
- Pb-free and RoHS/Green compliant

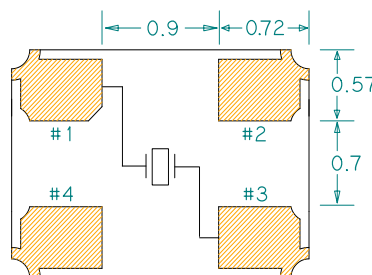
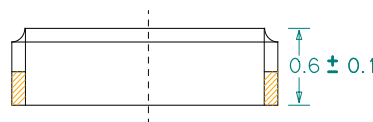
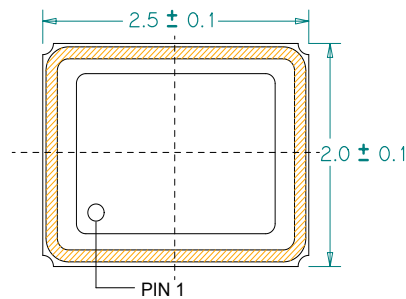
Product Description

The 4-pad FH Series seam seal devices incorporate a sub-miniature AT-cut crystal resonator housed in a standard 2.5 x 2.0mm ceramic package. These compact crystal are ideal for surface mounting in densely populated PCB applications.

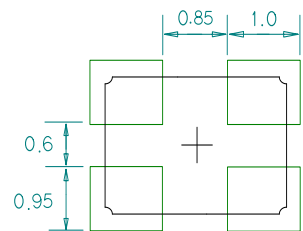
Applications

- Portable / hand-held PCs
- PCMCIA Cards
- Notebook PC
- Bluetooth
- Wireless LAN
- UWB
- ZigBee
- USB
- GPS
- HDD
- GSM, CDMA, GPRS

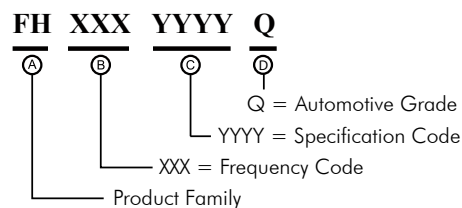
Package: (Dimensions are in mm)



Recommended Land Pattern:



Part Ordering Information:



Following the above format, SaRonix-eCera part numbers will be assigned upon confirmation of exact customer requirements.

Frequency Range:

- 12.0000 MHz to 66.0000 MHz (Fundamental)

Characteristics at 25°C ±3°C:

- Frequency Calibration Tolerance: ±10ppm to ±50ppm
- Load Capacitance: 7 to 32pF or Series Resonance
- Effective Series Resistance (ESR):
 - 12.0000MHz to 19.9999MHz: 140Ω max
 - 20.0000MHz to 29.9999MHz: 70Ω max
 - 30.0000MHz to 66.0000MHz: 50Ω max
- Drive Level: 10μW typ. 100μW max
- Shunt Capacitance: 5pF Max.

Temperature Range:

- Operating: -20 to +70°C; -40 to +85°C (AECQ Grade 3)
- Storage: -55 to +125°C

Temperature Stability:

- ±10ppm to ±50ppm (-20 to +70°C)
- ±15ppm to ±50ppm (-40 to +85°C)

Aging at 25°C, First Year:

- ±3ppm Max

Reflow Temperature:

- 260°C Max, 10 seconds max

For the latest product information visit: <http://www.pericom.com/products/timing/crystals/FHQ>

For soldering reflow profile and reliability test ratings go to: <http://www.pericom.com/pdf/sre/reflow.pdf>

For tape and reel information go to: http://www.pericom.com/pdf/sre/tr_2520_xo.pdf